



Facades available:

Barrine, Mackay, Corella,
 Heathcote, Lonsdale, Wentworth,
 Mckenzie, Blanche, Selina

Overall home width 10.55m

Overall home length 23.27m

Residence 311.8m² 33.6sq

Garage 36.4m² 3.9sq

Porch 3.3m² 0.4sq

Alfresco 16.1m² 1.7sq

Total 367.5m² 39.6sq

Listed details based on Barrine facade floorplan (illustrated)

FLOORPLAN OPTIONS

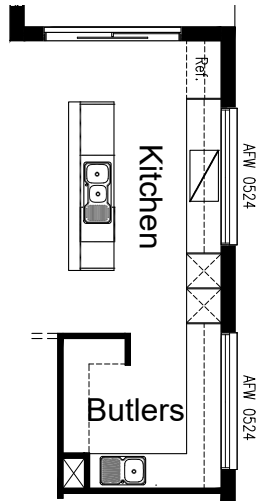
We personalise our floorplans. Talk to us about our huge range of ready-to-go design options.

*Copyright conditions. All photos and illustrations are representative only. Floor plans and specifications may be varied by Burbank without notice, the dimensions are diagrammatic only and a Building Contract with final drawings will display correct dimensions and detail. All designs are the property of Burbank and must not be used, reproduced, copied or varied, wholly or in part without written permission from an authorised Burbank representative. Copyright Burbank Australia (NSW) Pty Ltd. ABN 88 610 822 770. NSW BL 295627C ACT BL 2016566.

Call 13 BURBANK
Visit burbank.com.au

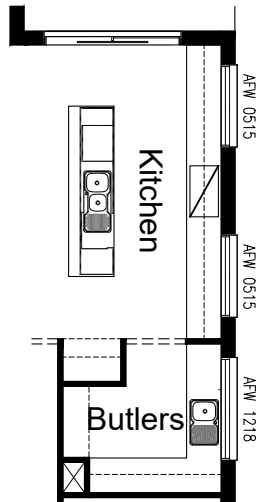
OPTION K1

Provide Kitchen option with reconfigured Butler's Pantry. Including 900mm retractable rangehood, 900mm electric cooktop, 2No. 600mm ovens in 2No. wall oven towers with pot drawers below and open shelf and doors above, 450mm drawer unit, dishwasher provision, 5No. 900mm base cupboards, 2No. 800mm base cupboards, 1No. 450mm base cupboard, 1No. 400mm base cupboard, 1No. 900mm base corner cupboard, 3No. 900mm overhead cupboards, 3No. 800mm overhead cupboards, 1No. 400mm overhead cupboard, 2No. 514x2410mm aluminium frame fixed window with no bottom reveal, refrigerator space with open shelf above, additional bench top and tiles to suit. Relocated single bowl sink and 4No. 450mm shelves to Butler's Pantry as shown.



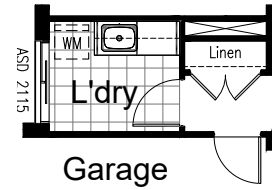
OPTION K2

Provide Kitchen option with reconfigured Butler's Pantry. Including 900mm retractable range hood, 900mm electric cook top, 900mm under bench oven, 450mm drawer unit, dishwasher provision with pot drawer, 2No. 900mm base cupboards, 2No. 800mm base cupboards, 6No. 700mm base cupboards, 1No. 450mm base cupboard, 1No. 300mm base cupboard, 1No. 900mm base corner cupboard, 8No. 700mm overhead cupboards, 1No. 900mm overhead cupboard, 1No. 800mm overhead cupboard, 2No. 514x1450mm aluminium frame fixed window with in bottom reveal, 1No. 1200x1810 aluminium frame fixed window with no bottom reveal, relocated refrigerator space with open shelf above, single bowl sink to Butler's Pantry, additional bench top and tiled splash back to suit. 4No. 450mm shelves to Butler's Pantry as shown.



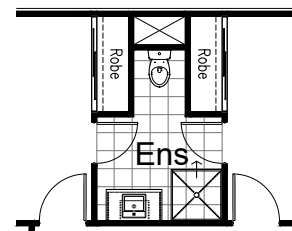
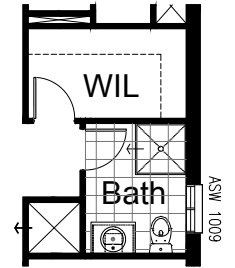
OPTION LD1

Provide Laundry Option with additional inset laminated trough, 2No. 700mm base cupboards, 2No. 700mm overhead cupboards with additional tiled splashback and bench top to suit.



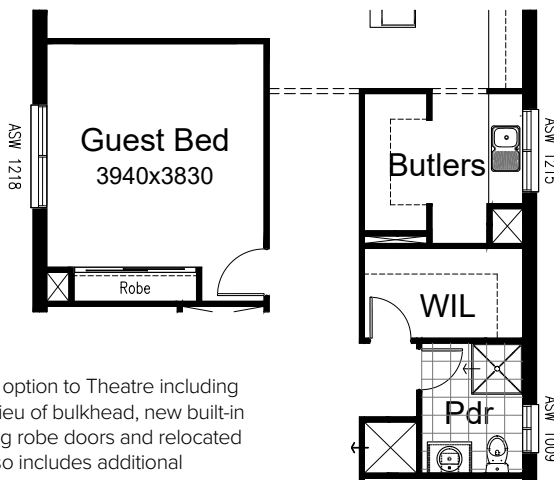
OPTION IP2

Provide Powder room option with additional 900x900mm tiled shower base to Powder which takes 200mm from the Walk-in Linen and relocate window as shown.



OPTION ENS1

Provide Jack and Jill Ensuite option to Bedrooms 2 and 3 in lieu of Walk-in Robes and Linen closet. Provide gyprock sliding robe doors to each standard Robe with 450mm shelves and hanging rails, void for heating stack, 900x900 tiled shower base, new WC and 982mm vanity with single basin. 2No. additional 720mm hinged doors to Ensuite. Note: option decreases size of Bedrooms 2 and 3 to 3000mm wide.

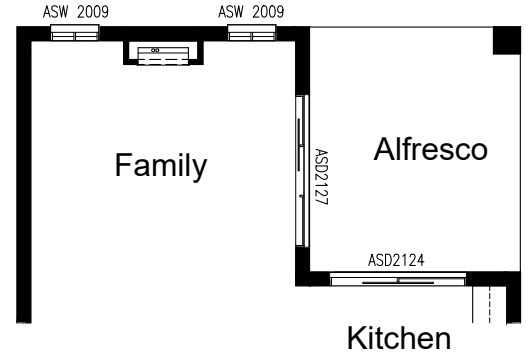
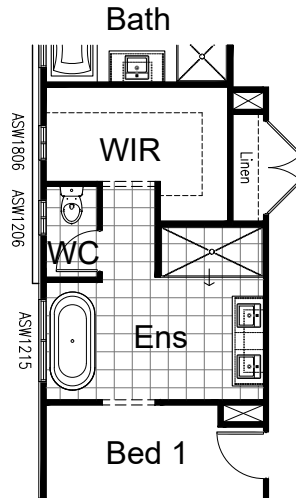


OPTION IP1

Provide Guest bedroom option to Theatre including 820mm hinged door in lieu of bulkhead, new built-in Robe with gyprock sliding robe doors and relocated heating stack. Option also includes additional 900x900mm tiled shower base to Powder which takes 200mm from the Walk-in Linen and relocate window as shown. Replace existing window with 1200mm X 1810mm aluminium sliding window.

OPTION ENS2

Provide reconfigured Ensuite and Walk-in Robe option with 1800x900 tiled shower base, 1582mm vanity with double basin, enclosed WC with 720mm hinged door, freestanding bath with 300mm spout, replace ASW1209 and ASW2009 windows with ASW1806, ASW1206 and ASW1215 windows. Provide Linen closet with 2No. 820mm hinged doors and 4No. 450mm shelves.



OPTION IP3

Provide Real Flame Inspire 900 gas fireplace, 400mm off floor level in a 1400mm x 420mm boxed out plaster wall with a 4 sided black fascia to Family room side wall.

OPTION EP1

Provide Stacker sliding door option by replacing 2No. ASD2124 sliding doors with ASDS2132 and ASDS 2126 stacker sliding doors. Steel post to corner to support lintels above doors.



OPTION ENS3

Provide Ensuite option with 1200x900 tiled shower base, 1675 bath with tiled hob, 1582mm vanity with double basin, enclose WC with 720mm hinged door. Option decreases Walk-in Robes by 210mm. Provide Linen closet with 2No. 520mm hinged doors and 4No. 450mm shelves.

